

21ST CENTURY COMMUNITY LEARNING CENTERS HELP FAMILIES DURING THE PANDEMIC



WHAT ARE 21CCLCs?



The Nita M. Lowey 21st Century Community Learning Center programs (21CCLCs), funded by the Federal Department of Education, supplement school-day learning by offering academic enrichment opportunities and family services, particularly for students who attend high-poverty and low-performing schools.

Massachusetts 21CCLCs provide well-rounded, interactive, relevant, and engaging teaching and learning that meets the specific academic, social and emotional learning, and developmental needs of students.



SUPPORT DURING DISTANCE LEARNING

During the quick transition to distance learning amid the pandemic, 21CCLCs maintained their focus on student success and wellbeing, while responding to the immediate needs of students and families.

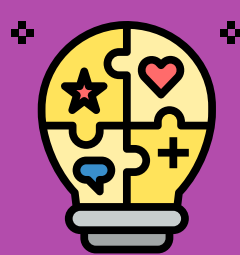
IN MASSACHUSETTS...

21CCLCs THAT WERE ABLE TO STAY OPEN DURING THE PANDEMIC OFFERED SERVICES TO **5,000** STUDENTS IN THE FOLLOWING WAYS:



REMOTE LEARNING

Offered remote learning and activities for 99% of students.



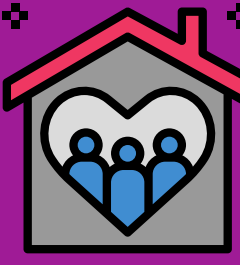
SEL SKILLS

Offered social and emotional learning support to 76% of students.



ACADEMIC HELP

Offered academic support to 72% of students.



HOME LEARNING

Offered home learning kits and resources to 74% of students and families.



FAMILY ENGAGEMENT AND SUPPORT

Offered family engagement and support activities such as food assistance or community-based support to 83% of students.



STAFF PLANNING/ PROFESSIONAL DEVELOPMENT

The majority of programs engaged in planning for summer programs and staff professional development.

